

2020 Impact Report



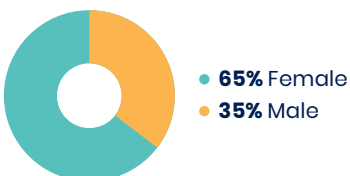
For 50 years HDC has been working with our neighbors to create real change and meaningful connections by creating, preserving, and strengthening affordable housing communities.

In the face of the COVID-19 pandemic, we never wavered in our commitment to a world where a safe, welcoming, affordable place to call home is open to everyone. HDC demonstrated resilience, ingenuity, and compassion to meet new challenges.

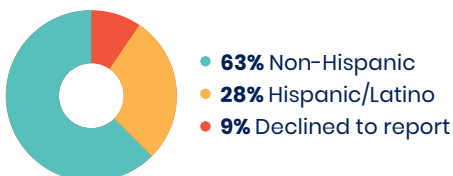
Our Diverse Communities

4,115 Residents

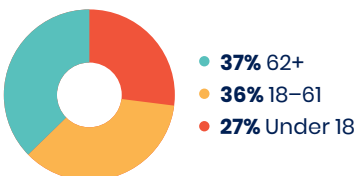
Gender Identity



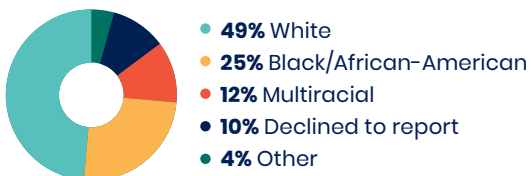
Ethnicity



Age



Race



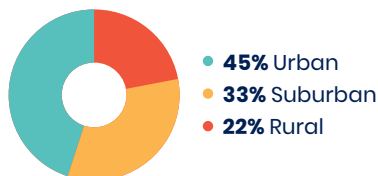
55 Affordable Housing Communities

3001 Apartments

13 Counties in Pennsylvania, Delaware, and Maryland

84% of households with annual income below \$30,000

Geography



COVID-19 Pandemic Response

When the COVID-19 pandemic hit, HDC expanded services and adapted operations to keep residents and employees safe. We worked tirelessly connecting residents to resources to make ends meet during the crisis.

Many HDC residents had work hours reduced because of COVID-19. One Lancaster County resident immediately sought help from HDC. We connected him to several relief programs, and he applied for state rental assistance the day the program opened.

“

I really appreciate how hard you work for us and the resources you provide... It means a lot to me that you know what I need.

– HDC Resident at Aster Place Apartments

”

\$712,000 → **\$243,500**

Cost savings to residents in benefits and resources accessed, including PA's rent rebate program, food programs, and rental assistance.

of these savings were COVID-related rent relief secured in partnership with residents.

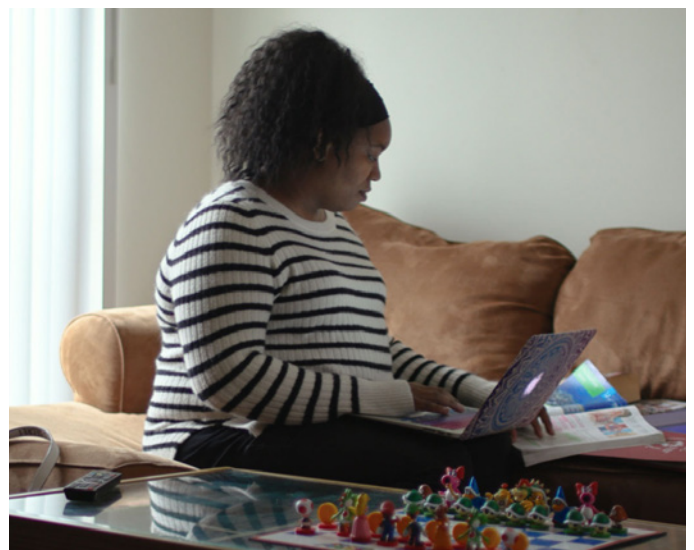
Advancing Equity

2020 Racial Equity, Diversity, and Inclusion (REDI) accomplishments:

- Created 18-member, cross-departmental work group to advance equity across HDC and our communities.
- Increased board diversity.
- Issued public antiracism and call to action statements; instituted land acknowledgement statement in groundbreaking activities.
- Established Juneteenth as a paid holiday for all employees.
- Instituted diversity, inclusion, implicit bias, and microaggression training for all employees.
- Revised Resident Selection Criteria to further racial equity in housing and advance fair housing practices.

400 Residents on average enrolled in Eviction Prevention Program monthly.

Long before eviction moratoriums took effect, we enrolled everyone struggling to pay rent in our Eviction Prevention Program. We proactively contacted households to provide support, connect them to new resources, and make a plan to meet monthly expenses.



Cultivating Partnerships



Equitable Development

HDC leveraged public, private, and philanthropic partnerships to work with Washington Place Equities on a mixed-use, mixed-income redevelopment of the former UPMC/St. Joseph's hospital in Lancaster.

Two local foundations committed a total of

\$2.25 million

**to phase one of HDC's plan to develop and own
120 new affordable homes.**

Increasing Access for Vulnerable Populations

HDC partnered with the Alliance for Building Communities and the Eastern PA Down Syndrome to advance housing opportunities for seniors (55+) and adults with intellectual and developmental disabilities. 20% of the apartments at 1528 West in Allentown (PA) will be developed for adults with physical, intellectual or developmental disabilities, all apartments will be visitable for individuals with physical disabilities, and services will support independent living for all residents.



Food Access

We expanded food security by connecting over

1100 residents

in 22 HDC housing communities with free, healthy food through our collaborations with:

- **Central PA Food Bank**
- **Helping Harvest**
- **Chester County Food Bank**
- **Meals on Wheels**
- **CAP of Lancaster County**



The Flats III



Beach Run Apartments

Expanding Housing

77 New Apartments Completed

- **The Flats III** (Wilmington, DE)
in partnership with Todmorden Foundation.

51 Apartments Under Construction

- **Beach Run Apartments** (Fredericksburg, PA)

634 Apartments in Pre-Development

- **The Apartments at College Avenue** (Lancaster, PA)
- **Manor View Terrace** (Millersville, PA)
- **The Flats IV** (Wilmington, DE)
- **1528 West** (Allentown, PA)

Plus preservation and rehabilitation activities planned at 10 communities in 4 counties in PA and in Delaware.

2 New Communities Under Management

- **Hamburg School Apartments** (Hamburg, PA)
50 apartments
- **Hartley Hall Senior Housing** (Pocomoke City, MD)
20 apartments.

Our Funders and Sponsors




AGM Financial Services, Inc.
AP Bene it Advisors
Architectural Concepts PC
BB&T/Truist Bank
Benchmark Construction
Bowen National Research
Capital Blue Cross Cargas
Cinnaire
Community First Fund
Community Lenders CREA
Credit Bureau of Lancaster
DiSabatino Construction
Dominion Due Diligence

Evolution Energy
First Citizens Community Bank
First National Bank
Fulton Bank
Funk and Sons
HD Supply
High Schwartz
Joseph Development
Lancaster Cares Fund
Lancaster County Community Foundation
Landis Communities
Lank, Johnson, and Tull
M&T Bank

McKonly & Asbury
Members 1st Federal Credit Union
Mid Penn Bank
Millers Mutual
Murray
NeighborWorks America
Nikolaus & Hohenadel
One2One
Patriot Home Care
Paul Davis Restoration
Penn Medicine Lancaster General Health
Pennsylvania Housing Finance Agency

People's Bank
PNC Bank
The S. Dale High Foundation
The Steinman Foundation
Stevens and Lee
Tabor Community Services
TD Bank Foundation
Tippetts/Weaver Architects
Troutman Pepper
United Disabilities Services Foundation
The Witmer Group
Yardi



4-6 W. King Street, Suite 4
Lancaster, PA 17603
(717) 291-1911 • hdcweb.org
Follow Us   

HDC builds hope and opportunity for all residents to reach their full potential by creating, preserving, and strengthening affordable housing communities.

Welcome home.